

INJURIES IN GREY BRUCE: UNINTENTIONAL BURNS



Burn injuries result from exposure to smoke, fire, and flames. On average, unintentional burn injuries cause 467 emergency department visits, 9 hospitalizations, and 2 deaths every year in Grey Bruce.

GREY BRUCE ED VISIT RATE HIGHER THAN ONTARIO RATE

The local rate of emergency department (ED) visits for burn injuries is twice as high as Ontario rate.



EMERGENCY DEPARTMENT VISITS



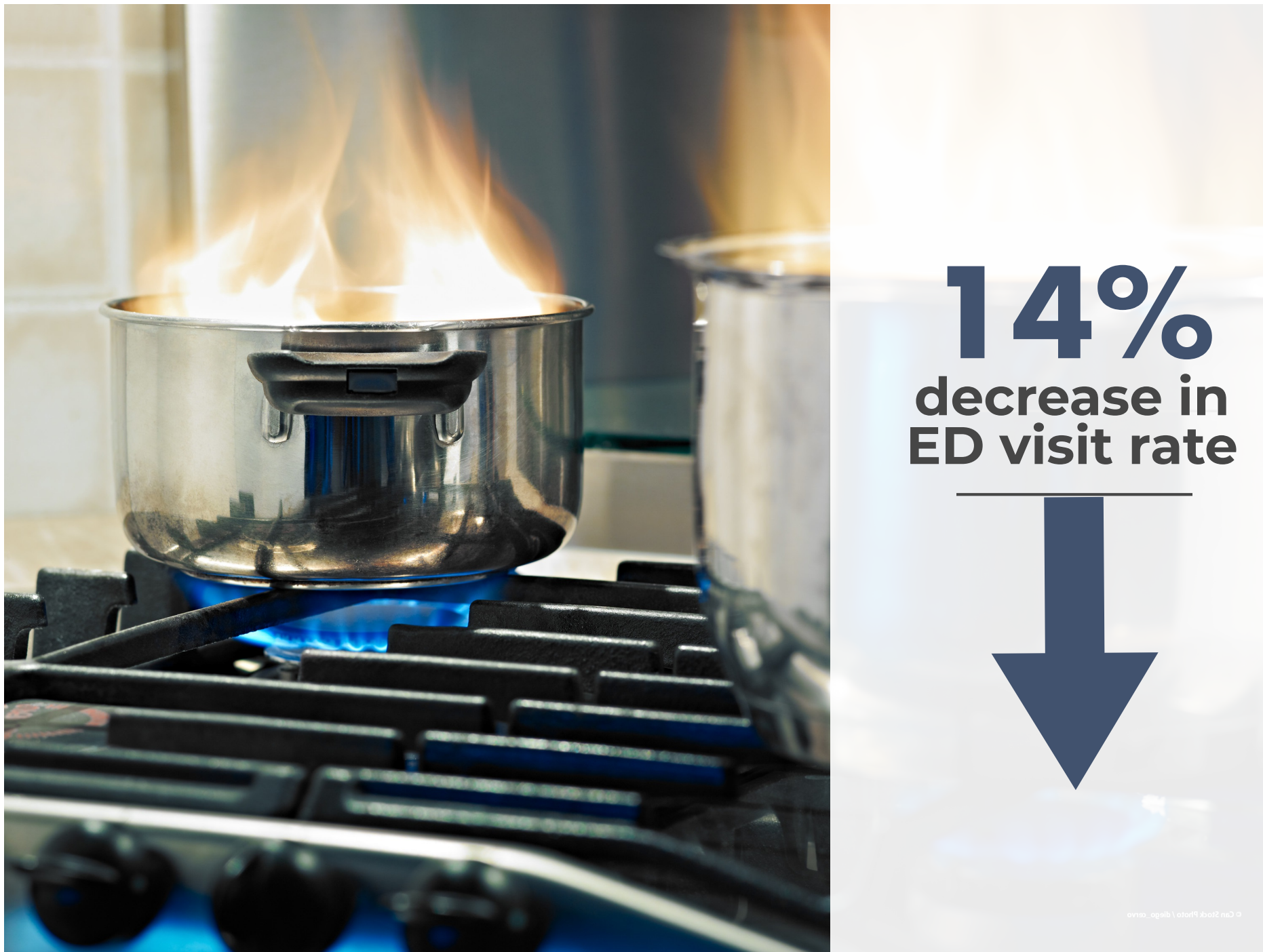
Rate **2x** as high in Grey
Bruce

YOUNG MALES AT GREATEST RISK

Male Grey Bruce residents aged 15 to 24 are at greatest risk of sustaining burn injuries.

LOCAL INJURY RATES HAVE DECREASED

The local rate of ED visits for burn injuries has decreased by 14% since 2003-04, and hospitalizations decreased by half over that same time period.



SOURCES:
Ambulatory Visits 2003–2016, Ontario Ministry of Health and Long-term Care, IntelliHEALTH Ontario, Date Extracted: November 26, 2018.
Ontario Mortality Data 2003–2015, Ontario Ministry of Health and Long-term Care, IntelliHEALTH Ontario, Date Extracted: February 5, 2019.

DATA NOTES: Rates refer to age-standardized rates. Averages refer to ten-year averages between 2007–2016 for ED visits and hospitalizations, and between 2006–2015 for deaths.

